

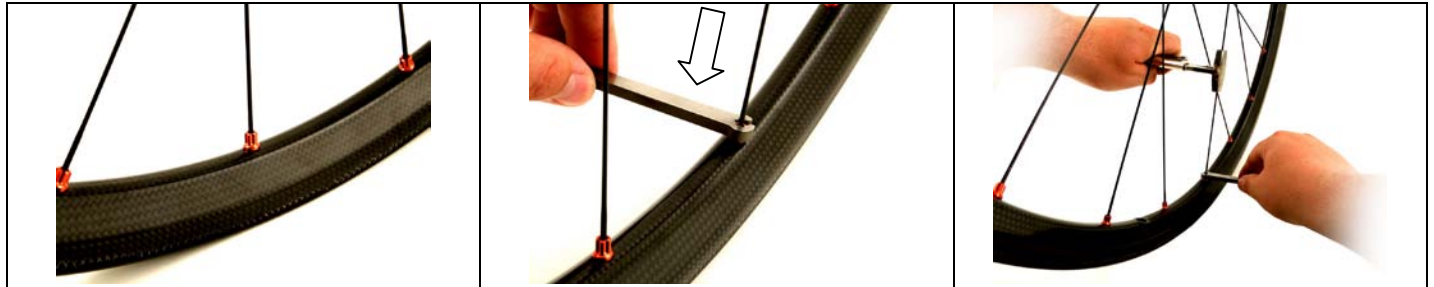


# MAINTENANCE

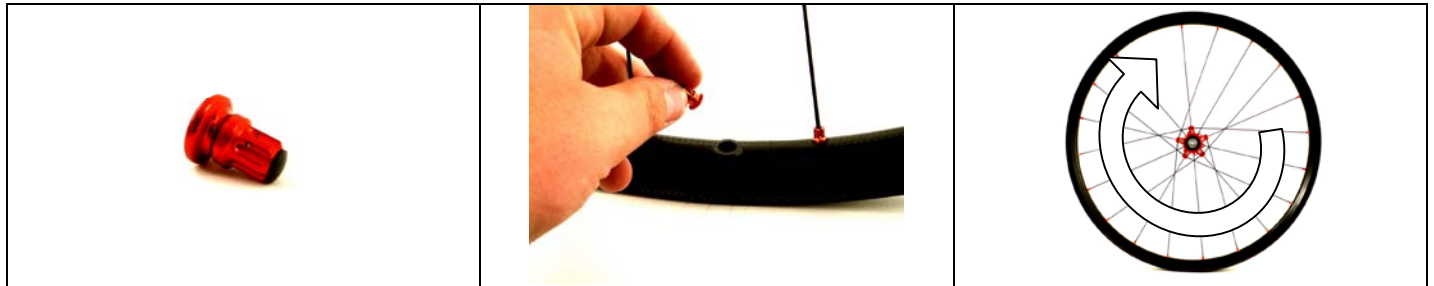
GROUP	TYPE	OPERATION	REVISION	DESCRIPTION
MTB WHEELS	ALL	001	1/2011	SPOKE REPLACEMENT RED CARBON FRONT / REAR WHEEL NON-DRIVE SIDE
PRODUCTS ON WHICH THE PROCEDURE IS APPLIED				
				
Red Carbon XRP™	Red Power SL™			



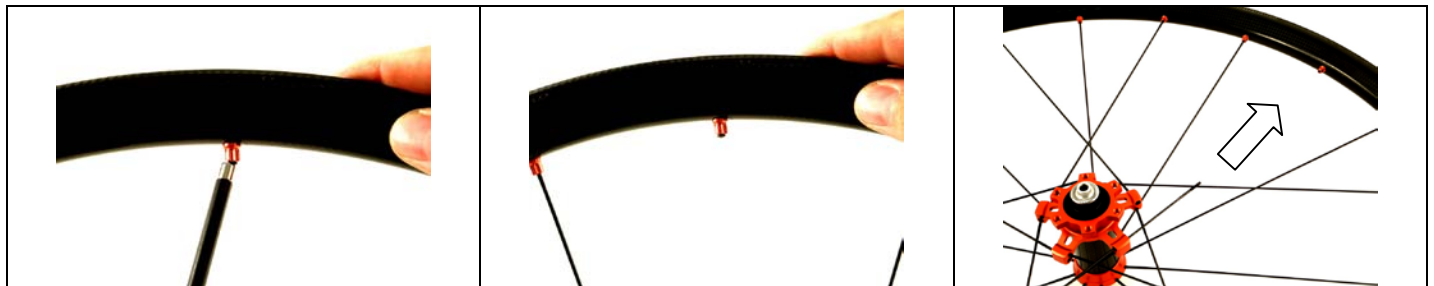
<b>1</b> Locate the spoke to be replaced.	<b>2</b> Use the special wrench to loosen the nipple.	<b>3</b> When round head spokes are being loosened, they tend to spin around. Use the special holder tool to hold the spoke still during the operation.
--	--	--



<b>4</b> Remove the nipple from the valve hole of the rim.	<b>5</b> Extract the spoke from the flange of the hub.	<b>6</b> Tighten the magnet-attracting insert on the nipple.
---	---	---



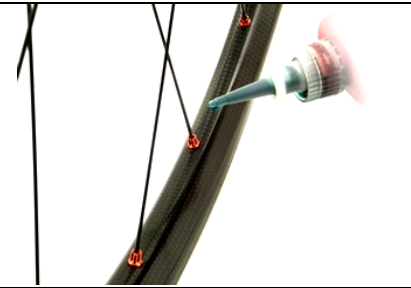


<b>7</b> Tighten the insert on the nipple completely to prevent it from sliding out while being drawn inside the rim.	<b>8</b> Insert the nipple with insert inside the rim through the valve hole.	<b>9</b> Using the special magnet, pull the nipple inside the rim up to the hole of the spoke to be replaced.
--	--	--



<b>10</b> Bring the nipple out from the hole of the rim.	<b>11</b> Loosen the magnet-attracting insert from the nipple.	<b>12</b> Insert the new spoke inside the flange of the hub.
---	---	---

# MAINTENANCE

		
<p><b>13</b></p> <p>Manually tighten the nipple on the spoke.</p>	<p><b>15</b></p> <p>Tighten the nipple with the wrench, holding the spoke still with the holder, until an adequate tension is reached.</p>	<p><b>15</b></p> <p>After tensioning, apply threadlocker between the nipple and the spoke.</p>