

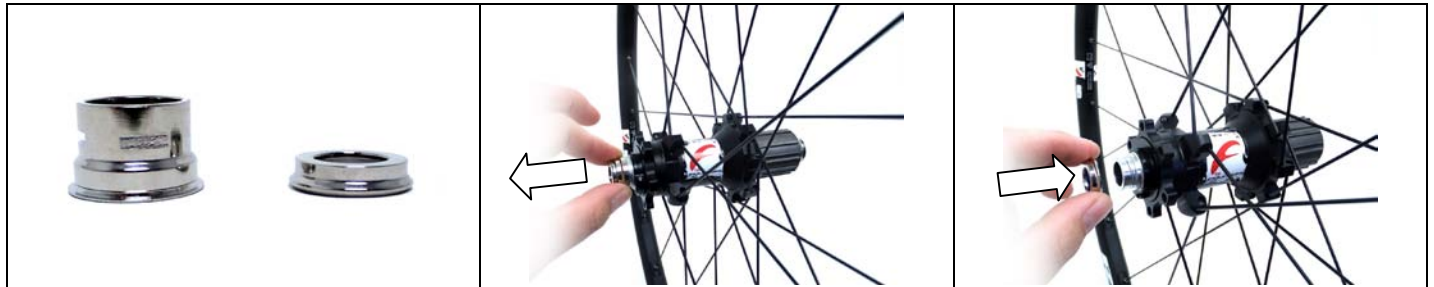


# MAINTENANCE

GROUP	TYPE	OPERATION	REVISION	DESCRIPTION
MTB WHEELS	INDUSTRIAL BEARINGS MECHANISM	013	0/2011	INSTALLATION OF THE ADAPTER KIT THRU-AXLE 12mm 142 • 135mm

**PRODUCTS ON WHICH THE PROCEDURE IS APPLIED**

									
Red Power XL™	Red Power 29" XL™								



<b>1</b> Take out the KIT.	<b>2</b> Remove the end cap of the hub from the side of the disk brake.	<b>3</b> Insert the adapter with shortest length on the disk brake side.
-------------------------------	--	---



<b>4</b> Rotate the hub from the opposite side.	<b>5</b> Remove the end cap of the hub from the side of the sprocket holder body.	<b>6</b> Remove the seal from the cap by pressing on two points at the same time.
--	--	--



<b>7</b> Check that the seal is in good condition.	<b>8</b> Insert the seal on the adapter with the longest length. The black shielded part faces towards the inside of the hub body.	<b>9</b> Fit the adapter on the hub axle.
---	---	--