
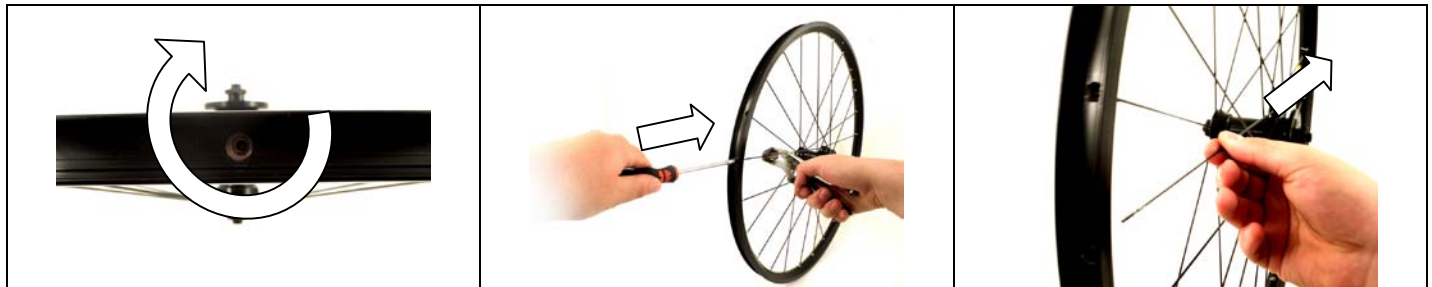


MAINTENANCE

GROUP	TYPE	OPERATION	REVISION	DESCRIPTION
MTB WHEELS	INDUSTRIAL BEARINGS MECHANISM	007	0/2011	CURVED HEAD SPOKE REPLACEMENT RED POWER FRONT AND REAR WHEEL

PRODUCTS ON WHICH THE PROCEDURE IS APPLIED

									
Red Power™									



<p>1</p> <p>The nipple is loosened using a 5.5 mm hex screwdriver.</p>	<p>2</p> <p>Insert the screwdriver on the rim and loosen the nipple. When round head spokes are being loosened, they tend to spin around. Use the special holder tool to hold the spoke still during the operation.</p>	<p>3</p> <p>Remove the spoke from the flange of the hub.</p>
---	--	---



<p>4</p> <p>When fitting the spoke, respect the insertion direction of the spoke head. There are two possible positions: 1) Head facing the outside of the hub 2) Head facing the inside of the hub.</p>	<p>5</p> <p>Insert the new spoke.</p>	<p>6</p> <p>Make sure that the nipple is intact. Replace if damaged.</p>
---	--	---



<p>7</p> <p>Insert the nipple in the screwdriver.</p>	<p>8</p> <p>Tighten the nipple on the spoke. When round head spokes are being loosened, they tend to spin around. Use the special holder tool to hold the spoke still during the operation.</p>	<p>9</p> <p>After tensioning, apply threadlocker between the nipple and the spoke in the inner part of the rim.</p>
--	--	--